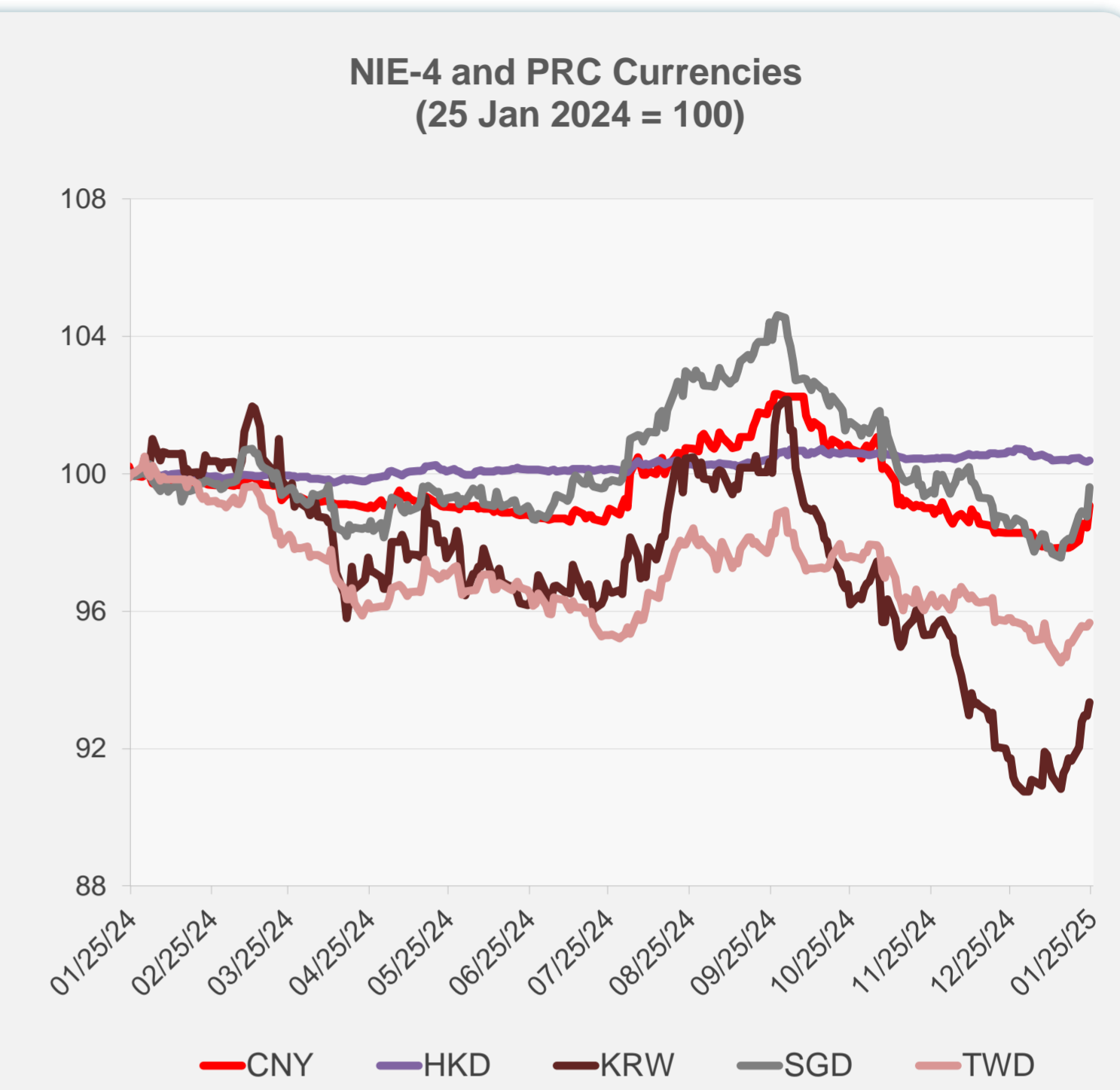
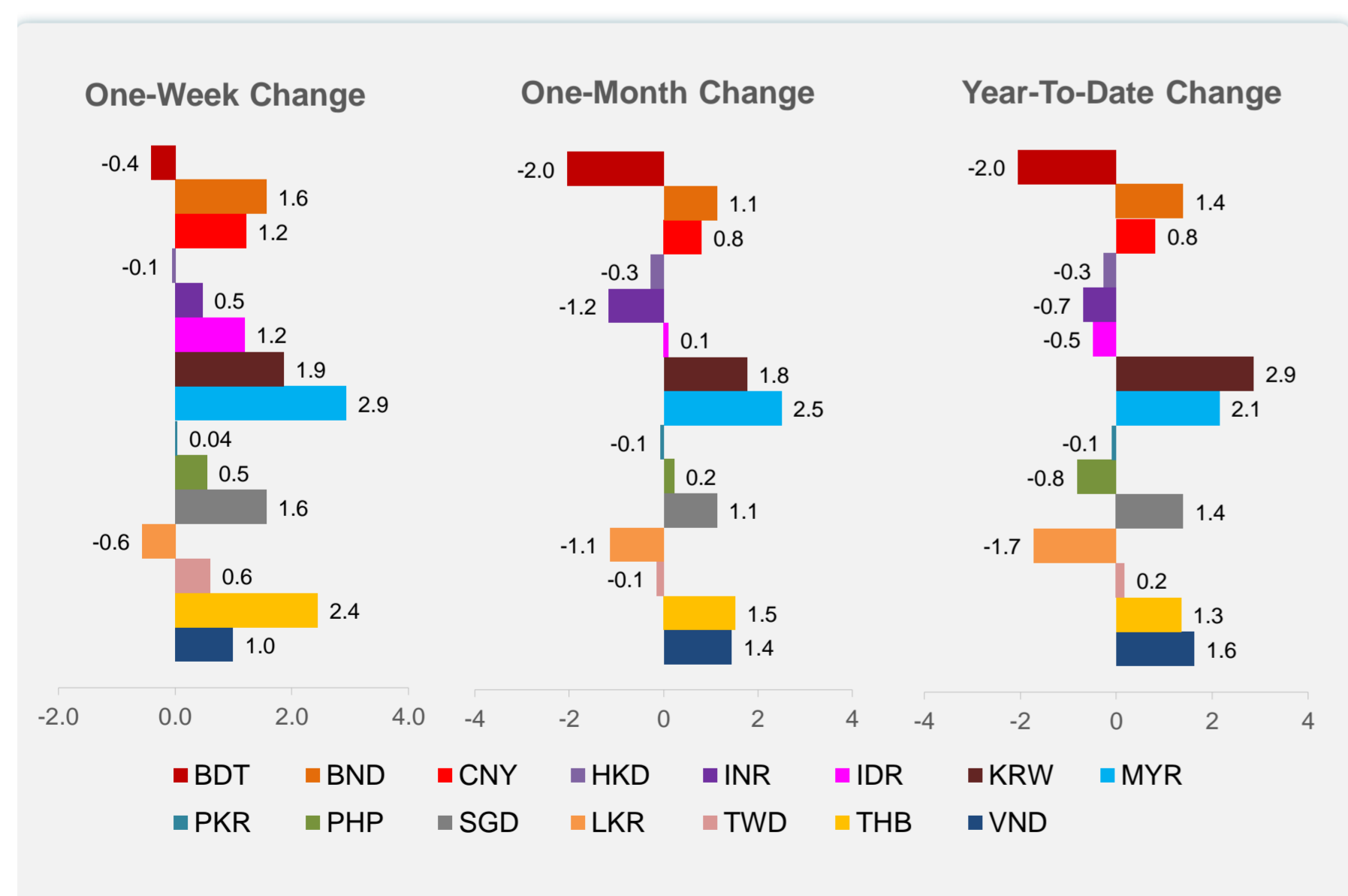
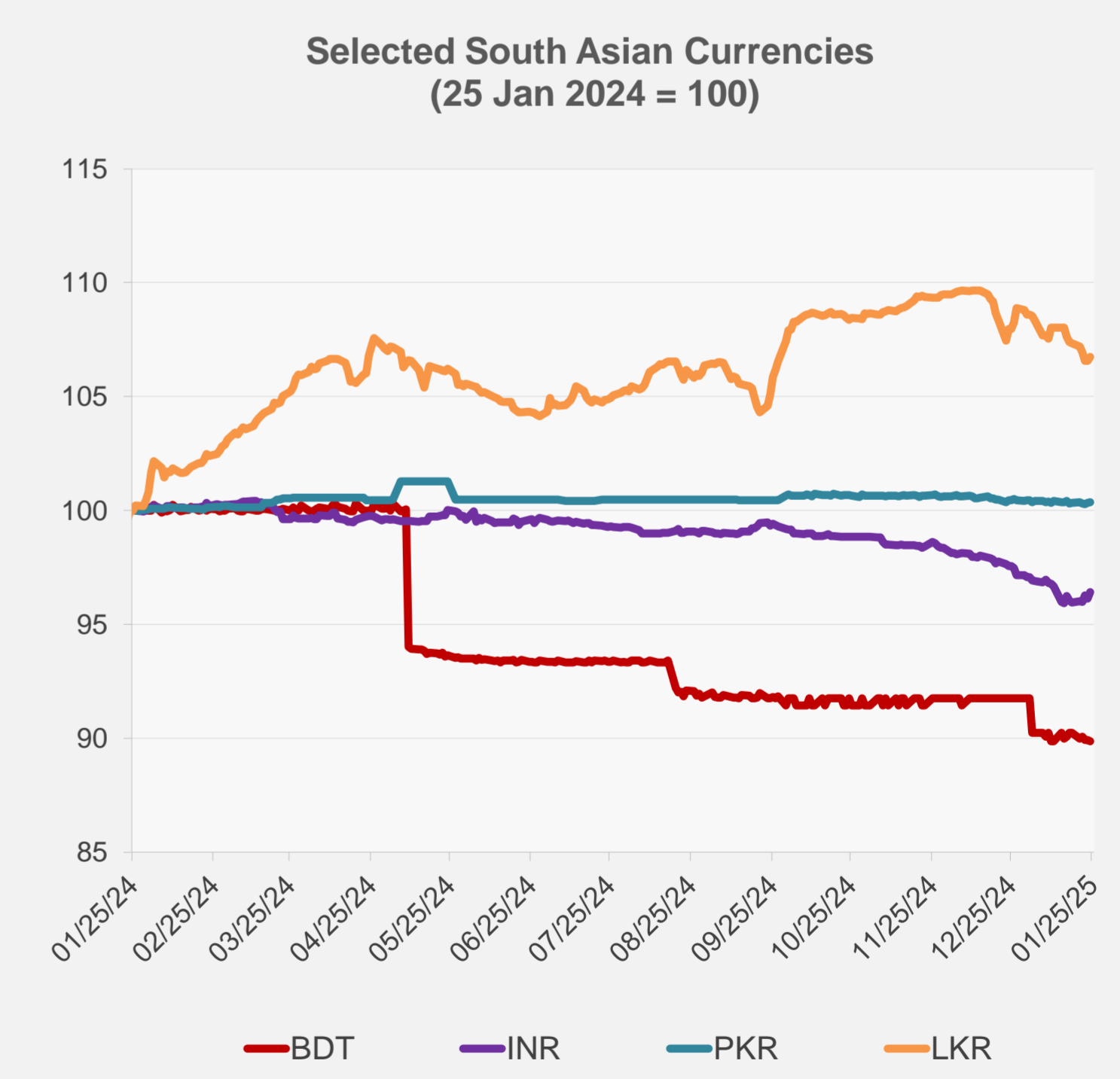
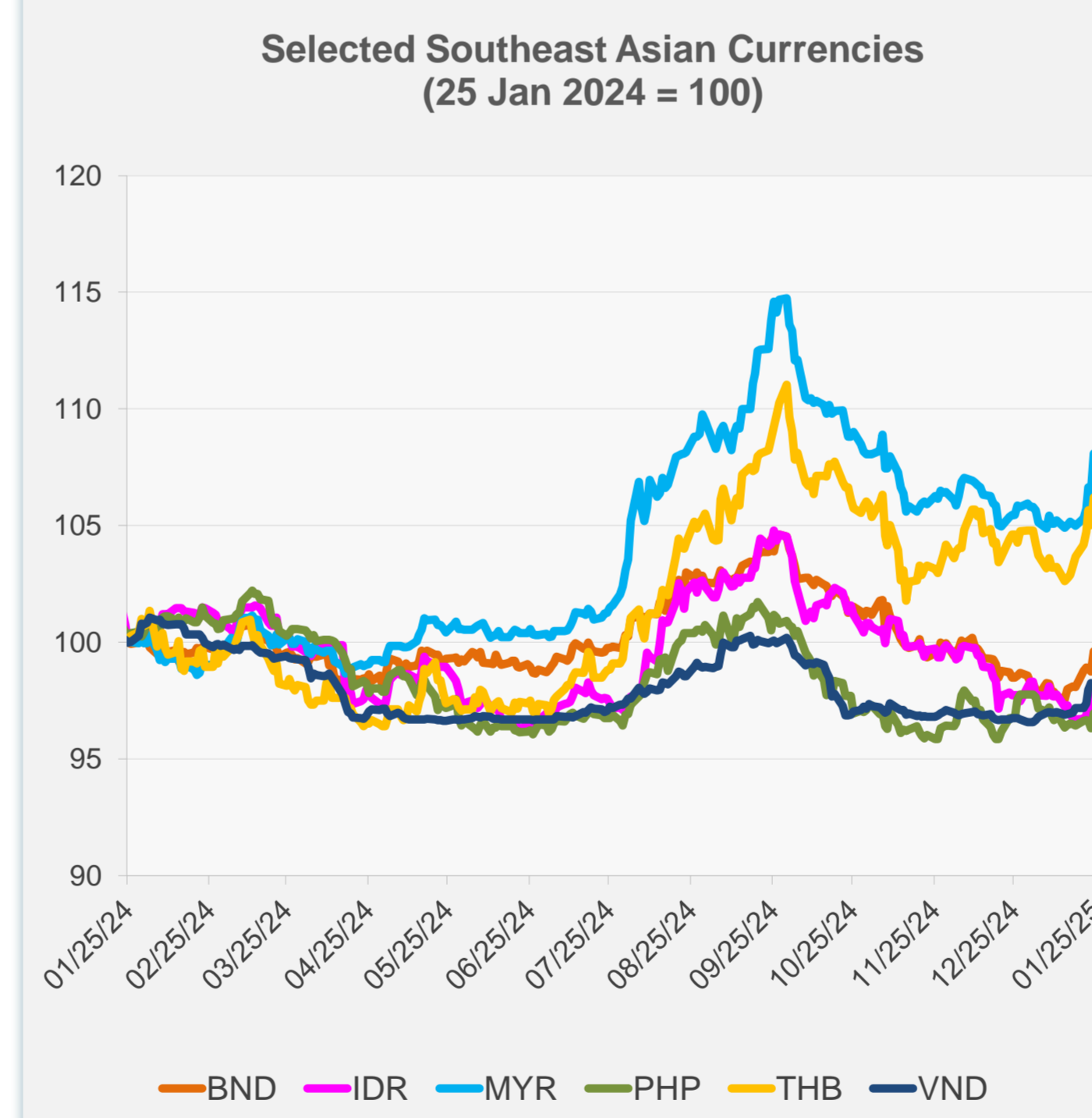


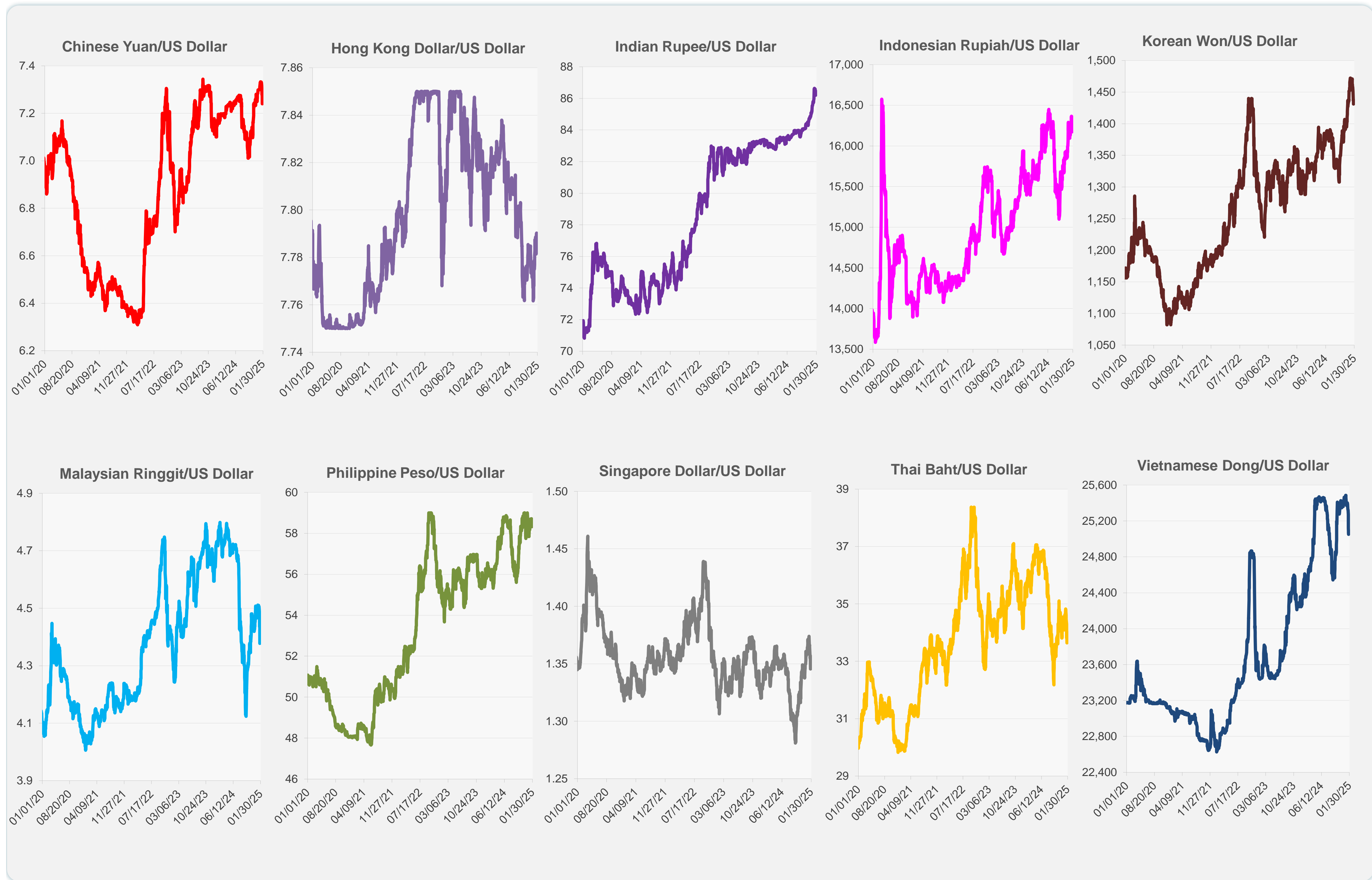
	Latest Closing	% change from Previous Day	% change from 01-Jan-25
Euro	0.95	1.16	1.57
Japanese yen (JPY)	155.72	0.29	0.93
Bangladeshi taka (BDT)	122.00	-0.04	-2.05
Brunei dollar (BND)	1.35	0.86	1.39
Chinese yuan (CNY)	7.24	0.65	0.81
Hong Kong dollar (HKD)	7.79	0.02	-0.26
Indian rupee (INR)	86.21	0.30	-0.69
Indonesian rupiah (IDR)	16,172.50	0.66	-0.48
Korean won (KRW)	1,431.20	0.42	2.86
Malaysian ringgit (MYR)	4.38	1.52	2.15
Pakistan rupee (PKR)	278.60	0.04	-0.08
Philippine peso (PHP)	58.32	0.67	-0.82
Singapore dollar (SGD)	1.35	0.86	1.39
Sri Lanka rupee (LKR)	298.14	0.16	-1.72
Taipei,China NT dollar (TWD)	32.73	0.12	0.17
Thai baht (THB)	33.64	1.11	1.35
Vietnamese dong (VND)	25,078.00	-0.11	1.62



NIE = Newly Industrialized Economies

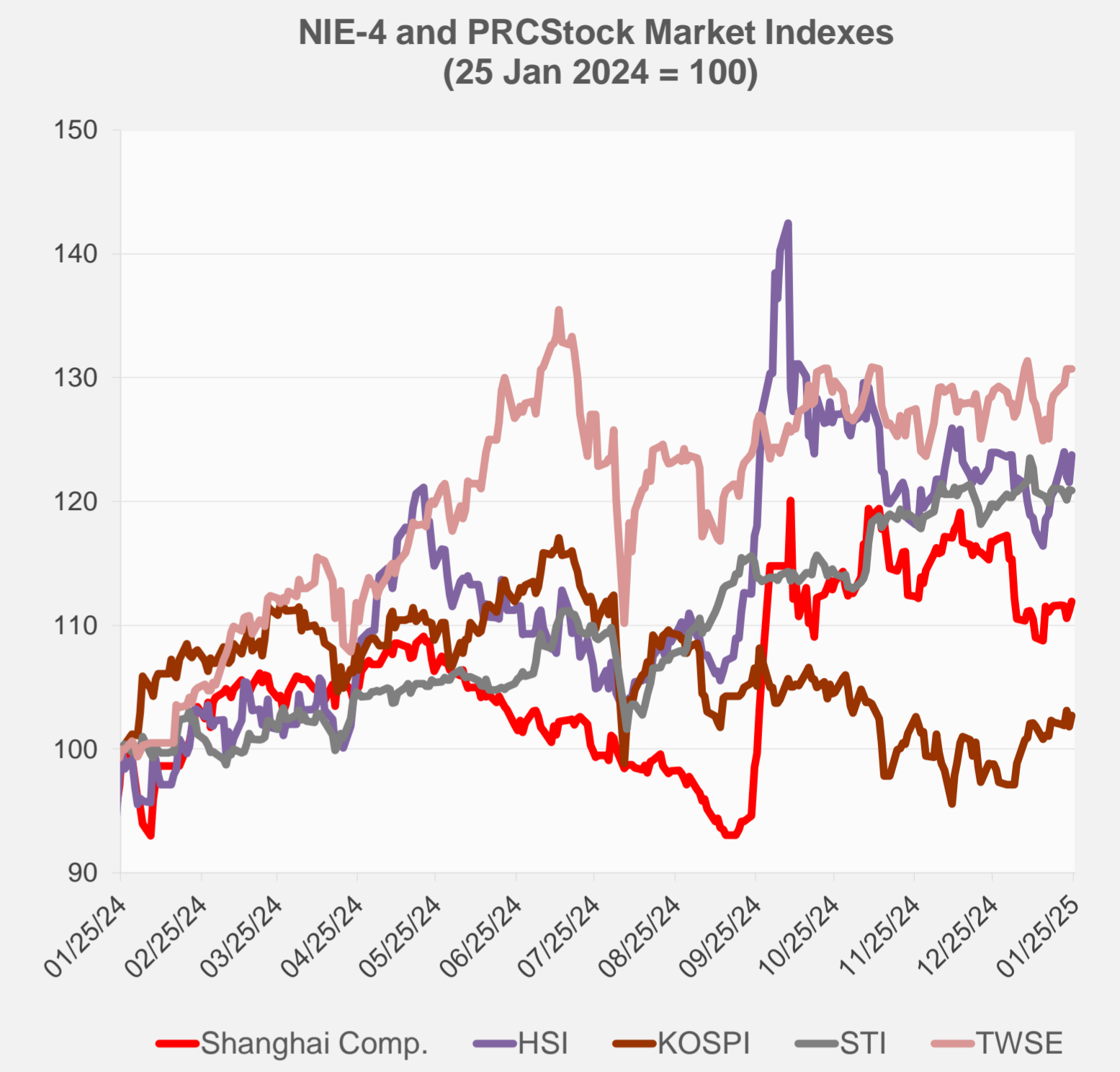
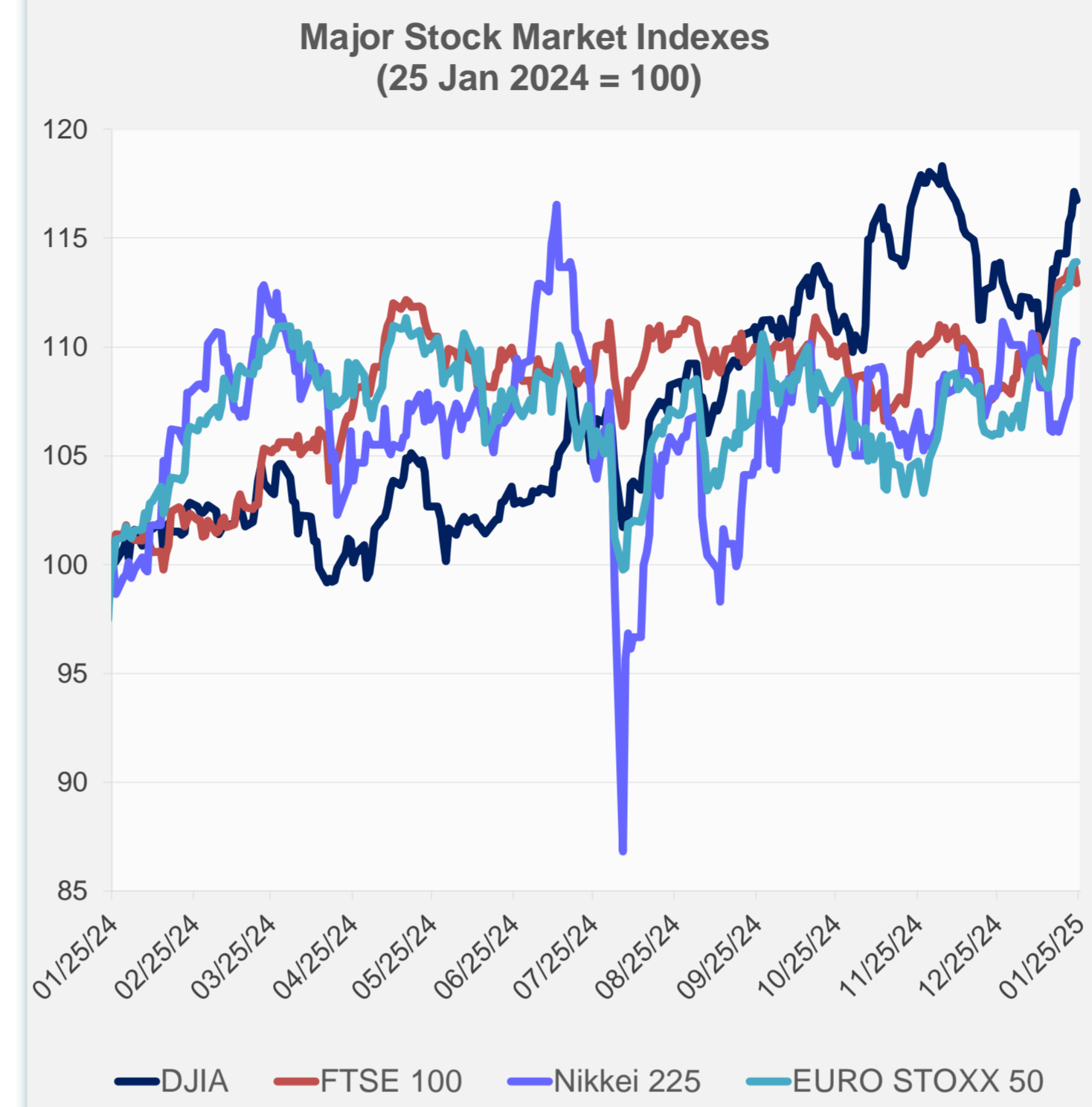


Note: Negative/Decreasing values indicate depreciation of local currency, and positive/increasing values indicate appreciation.
Source: ADB calculations using data from Haver Analytics.

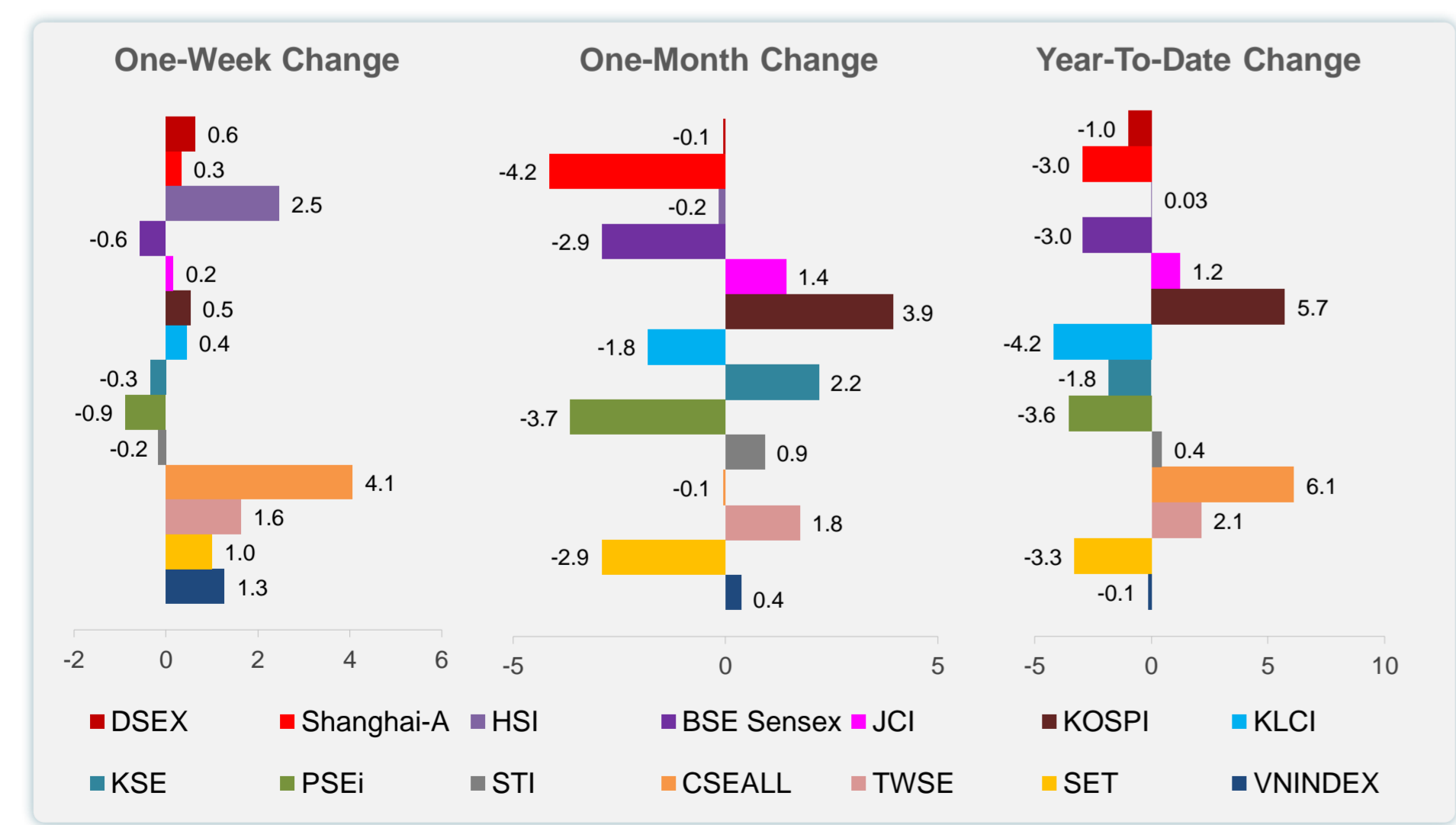
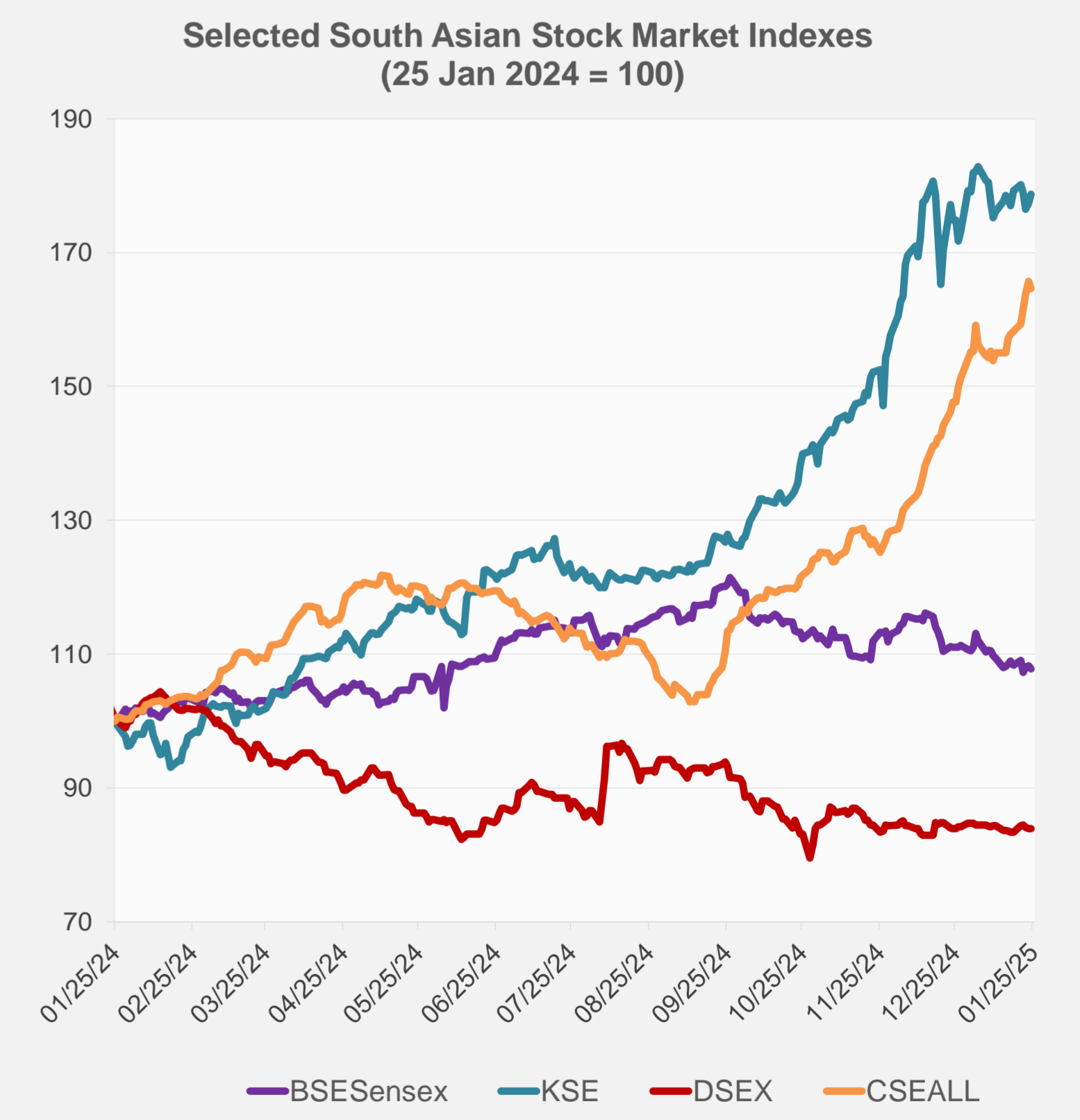
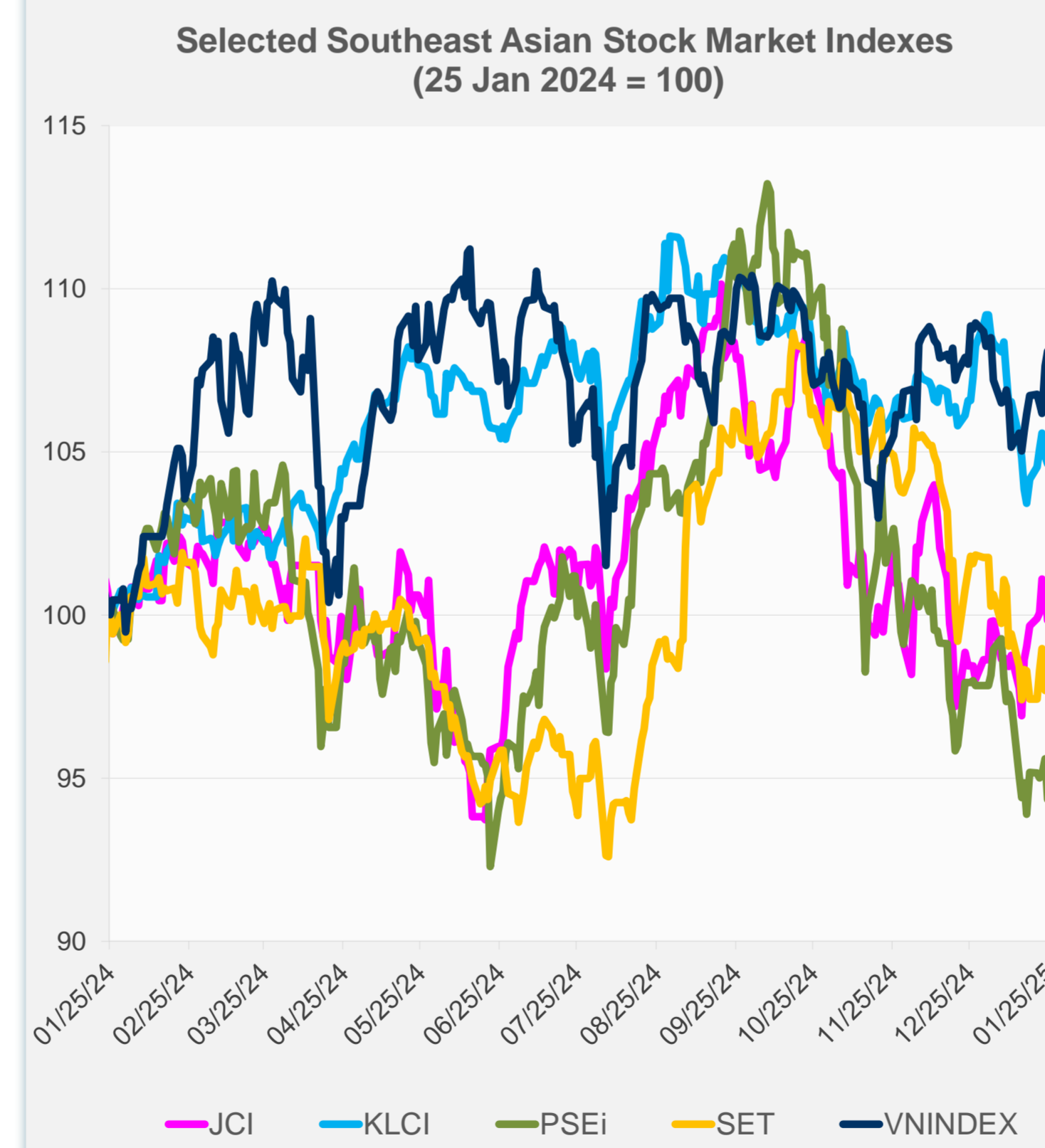


Source: Haver Analytics.

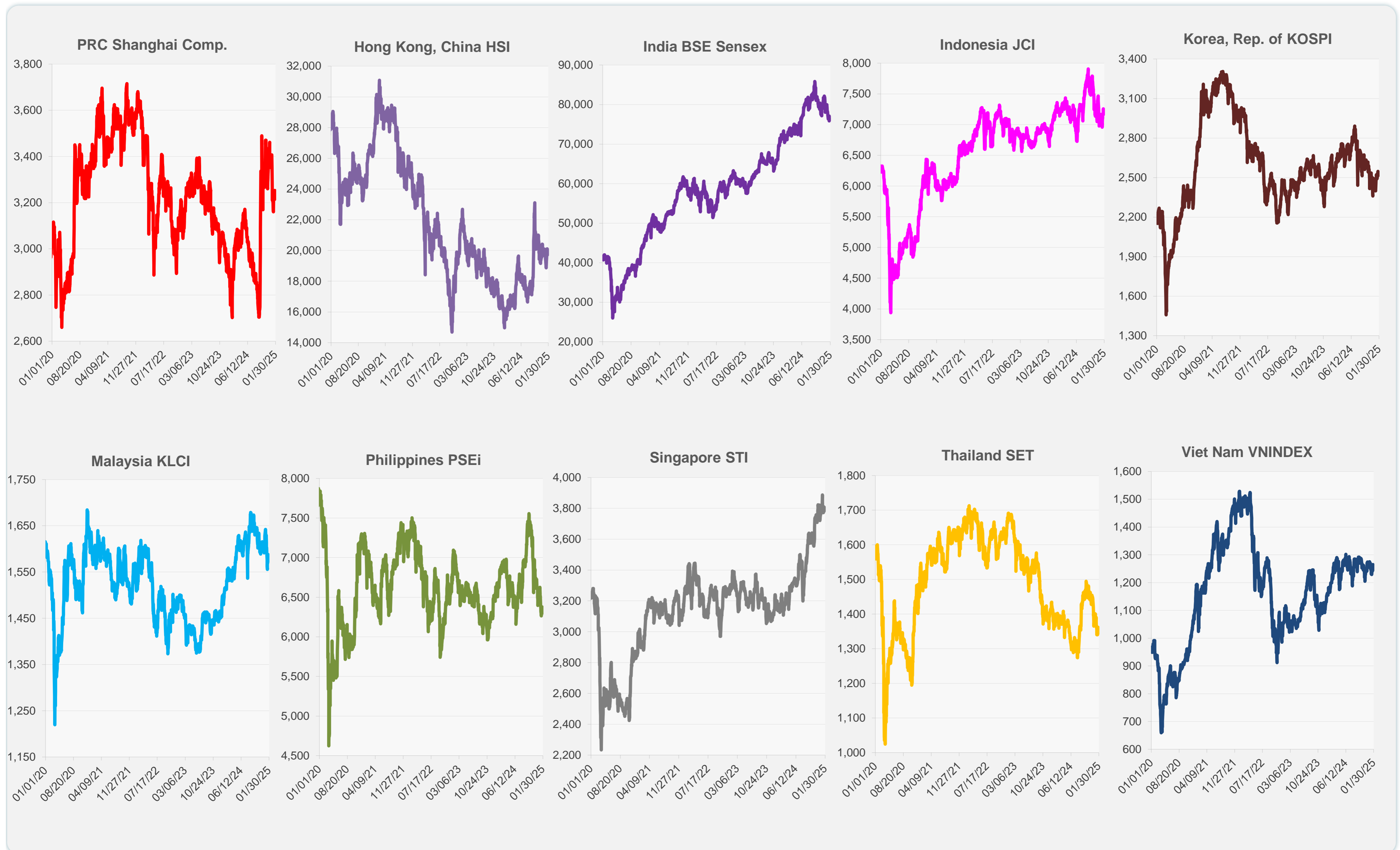
	Latest Closing	% change from Previous Day	% change from 01-Jan-25
US Dow Jones Ind Avg	44,424.25	-0.32	4.42
US NASDAQ	19,954.30	-0.50	3.33
US S&P 500	6,101.24	-0.29	3.73
UK FTSE 100	8,502.35	-0.73	4.03
EURO STOXX 50	5,219.37	0.04	6.61
Japan NIKKEI 225	39,931.98	-0.07	0.09
Bangladesh DSEX	5,166.53	0.00	-0.99
PRC Shanghai Comp.	3,252.63	0.70	-2.96
Hong Kong, China HSI	20,066.19	1.86	0.03
India BSE Sensex	76,190.46	-0.43	-2.95
Indonesia JCI	7,166.06	-0.92	1.22
Korea, Rep. of KOSPI	2,536.80	0.85	5.72
Malaysia KLCI	1,573.73	-0.22	-4.18
Pakistan KSE 100	114,880.48	0.74	-1.82
Philippines PSEi	6,296.20	-1.30	-3.56
Singapore STI	3,804.26	-0.06	0.44
Sri Lanka CSEALL	16,917.86	-0.64	6.10
Taipei, China TWSE	23,525.41	0.00	2.13
Thailand SET	1,354.07	0.74	-3.30
Viet Nam VNINDEX	1,265.05	0.43	-0.14



NIE = Newly Industrialized Economies



Sources: ADB calculations using data from CEIC Data Company and Haver Analytics.



Sources: CEIC Data Company and Haver Analytics.

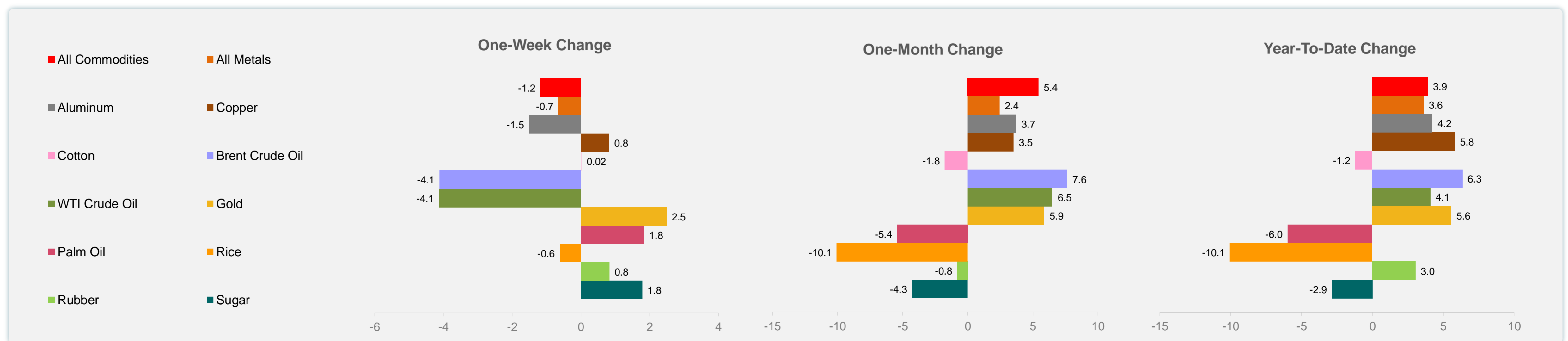
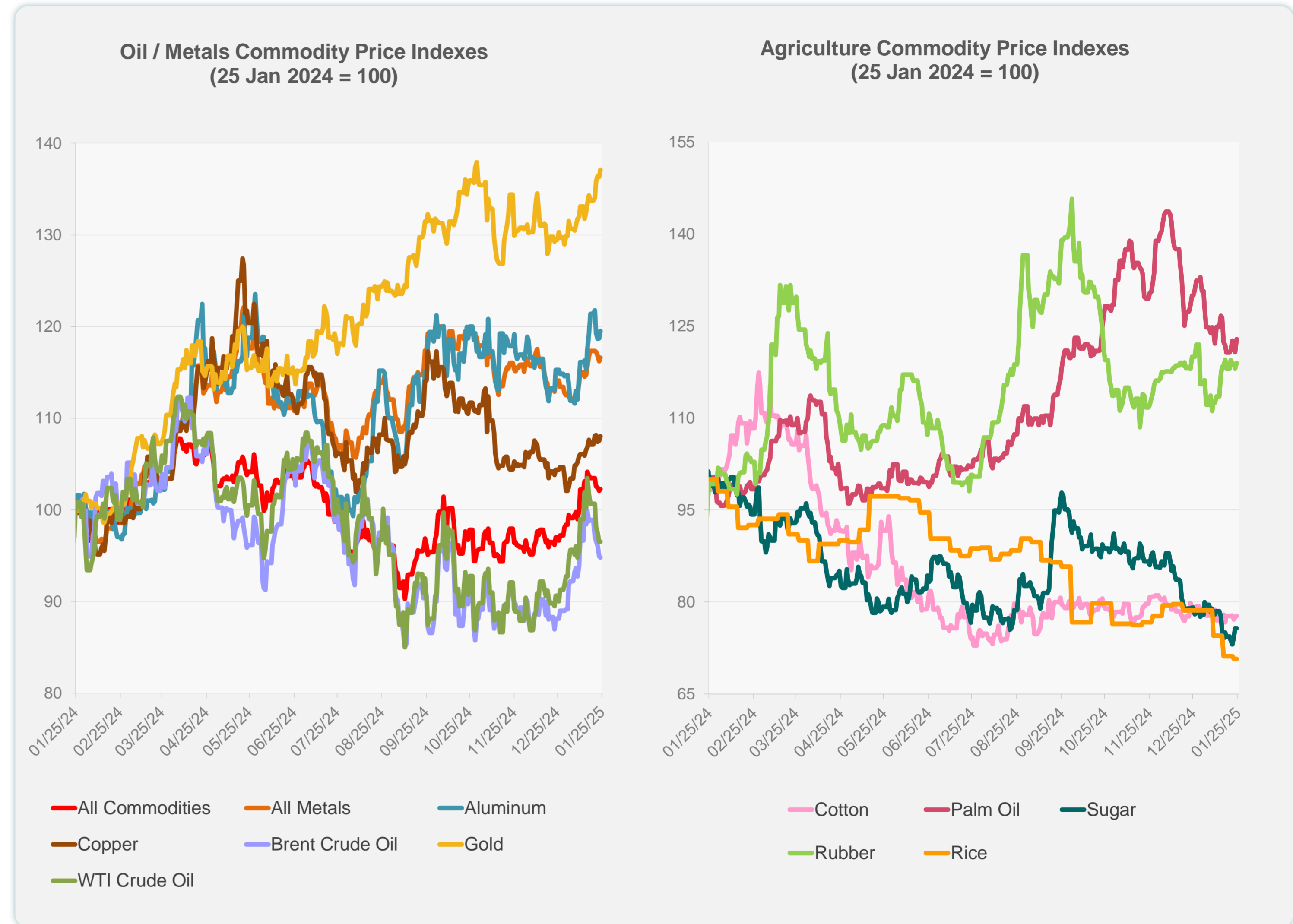
Daily Market Watch
COMMODITY PRICES

27 January 2025, 9:00 AM Manila

	Unit	Latest Closing	% change from Previous Day	% change from 01-Jan-25
S&P All Commodities	US\$	571.14	0.15	3.91
S&P All Metals	US\$	318.48	0.32	3.61
Aluminum	US\$/metric ton	2,633.67	0.71	4.23
Copper	US\$/metric ton	9,156.25	0.42	5.82
Cotton	US cents/lb	65.11	0.22	-1.20
Brent Crude Oil	US\$/barrel	78.81	-0.14	6.35
WTI Crude Oil	US\$/barrel	74.66	0.05	4.10
Gold	US\$/troy oz	2,770.58	0.57	5.57
Palm Oil	US\$/metric tonne	1,034.38	1.77	-5.98
Rice ¹	US\$/metric ton	483.00	0.00	-10.06
Rubber ²	US\$/kg	244.00	0.83	3.04
Sugar	US cents/lb	17.68	0.00	-2.86

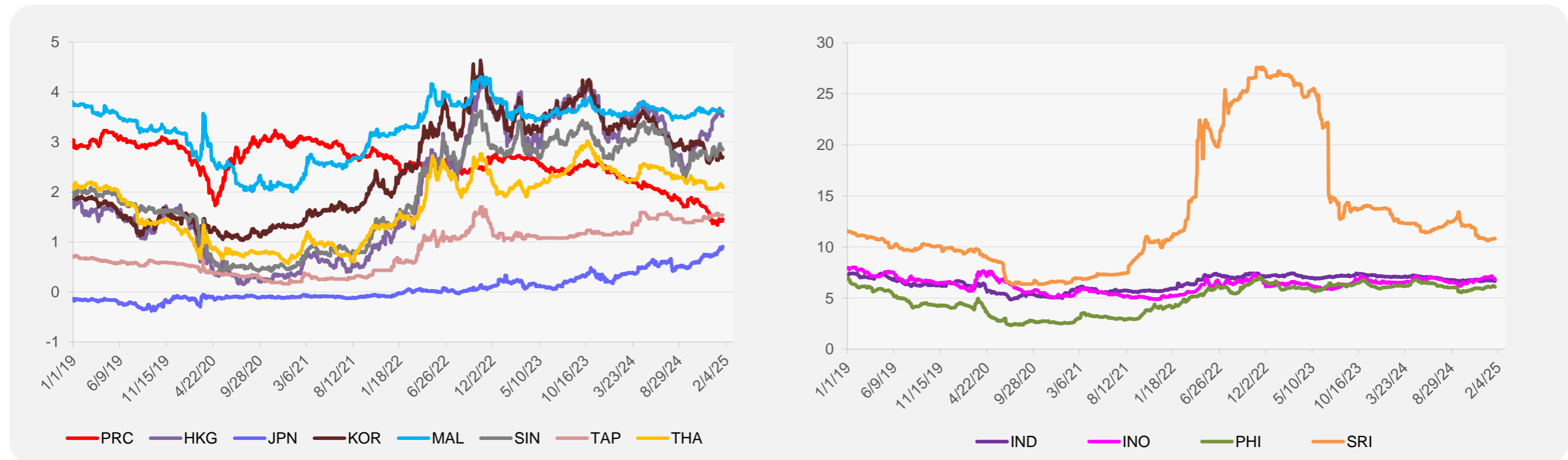
¹ Latest closing price from 22 January 2025.

² Singapore Exchange, Ribbed Smoked Sheet Rubber.

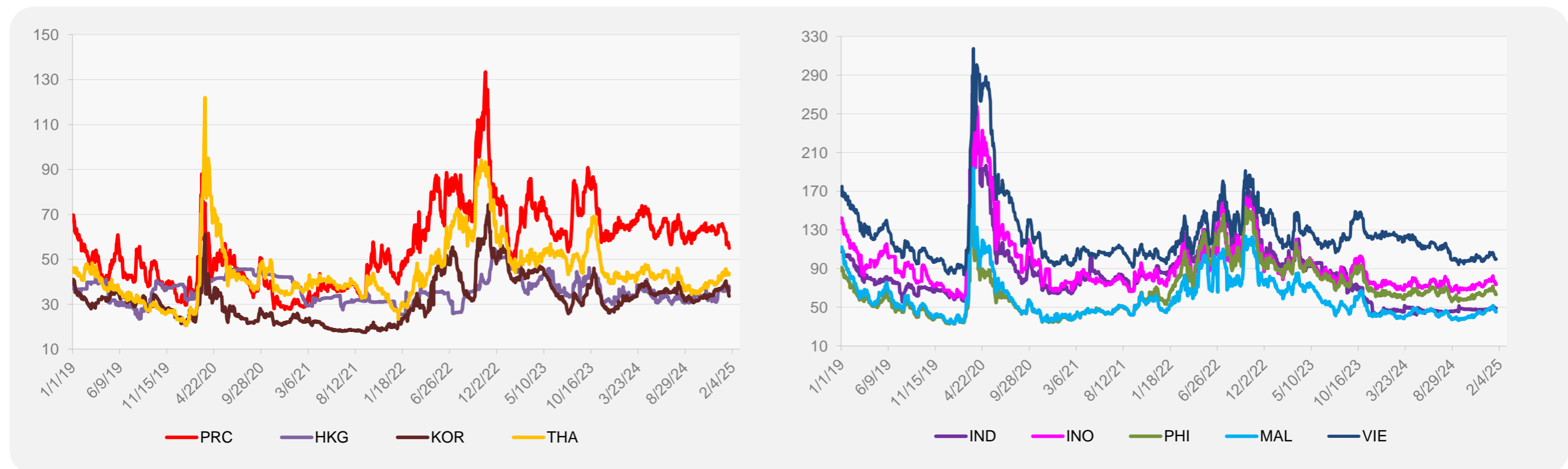


Source: ADB calculations using data from Bloomberg.

5-YEAR LOCAL CURRENCY GOVERNMENT BOND YIELDS (%)



5-YEAR CREDIT DEFAULT SWAP¹



¹ In USD and based on sovereign bonds.
Source: ADB calculations using data from Bloomberg.